



# DIAGNOSTIC THERMAL IMAGER

QUICK START GUIDE



[diagnostics.snapon.com](https://diagnostics.snapon.com)

**Snap-on**

# Controls and Features



## Getting Started

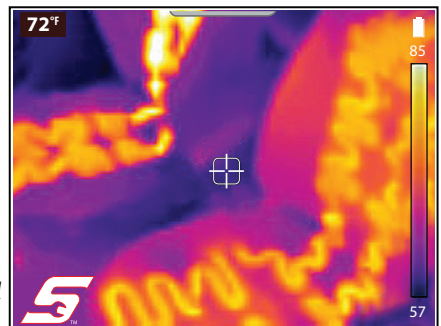
1. Press and release the **Power Button**,  to turn on the Thermal Imager.

2. Point the Thermal Imager at the desired object(s).

*Use the target in the center of the screen to make "spot" temperature measurements.*

3. Press the **Screen Capture Trigger**, to save an image of the active screen.

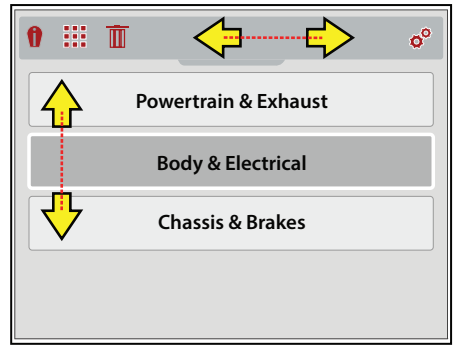
*Images are automatically saved, and can be viewed in the gallery, or transferred to your PC using the USB cable.*



- Press the **Menu** button to open the menu.



Use the control buttons to navigate, and select the desired function or menu option.



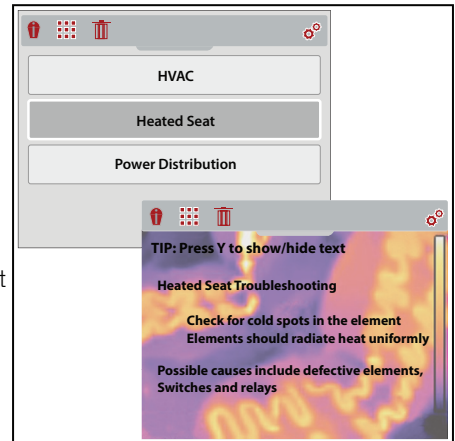
### Toolbar Icons

	<b>Expert Tips</b> - view experience-based troubleshooting tips
	<b>Gallery</b> - view saved images
	<b>Delete</b> - delete saved images
	<b>Settings</b> - adjust device settings

### Menu Navigation

	<b>Left/Right</b> - navigate the toolbar
	<b>Up/Down</b> - navigate the menu options
	<b>Y</b> - make (accept) selection
	<b>N</b> - cancel selection

- Select the **Expert Tips** icon.
- Select the applicable vehicle system, and component from the menu options to display available Expert Tips.
- When finished, select the **N** button to return to the Expert Tips menu, or select the **Menu** button to return to imager mode.



## Battery Charging

- Connect the supplied USB cable to the micro USB jack on the top of the Thermal Imager, and to the USB power supply adapter.
- Connect the USB power supply adapter to a live power source.

The battery charging LED will turn on, and the battery level icon will display as indicating the battery is charging.

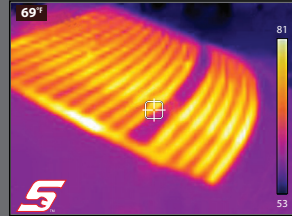
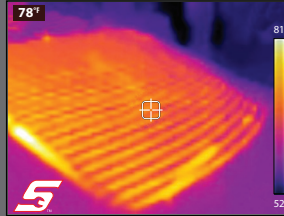


# Typical Applications

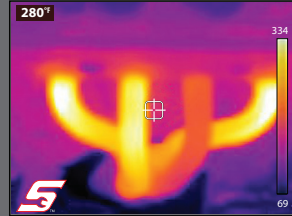
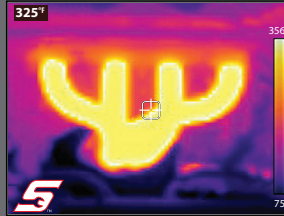
Known Good

Known Bad

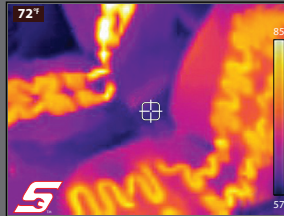
Is the rear window defroster working?



Which cylinder is misfiring?



Which heated seat is not working?



## Warranty Registration

Please register your warranty online at:

**U.S. Customers** - [store.snapon.com/ProductRegistration.aspx](http://store.snapon.com/ProductRegistration.aspx)

**Canadian Customers** - [www.snapon.com/productregistration](http://www.snapon.com/productregistration)

## Customer Support

**Phone:** (800) 424 7226

**E-mail:** [diagnostics\\_support@snapon.com](mailto:diagnostics_support@snapon.com)

**Website:** [diagnostics.snapon.com](http://diagnostics.snapon.com)

## User Manual

The user manual is included on the microSD card. Connect to your PC via USB to access the manual located in the **Manuals** folder. The manual is also available on our website: [diagnostics.snapon.com/usermanuals](http://diagnostics.snapon.com/usermanuals)

Snap-on is a trademark, registered in the United States and other countries, of Snap-on Incorporated. All other marks are trademarks or registered trademarks of their respective holders. ©2016 Snap-on Incorporated. All pictures and illustrations shown are for reference purposes only. All information including specifications herein are subject to change without notice. ZEETH300A1 Rev. D